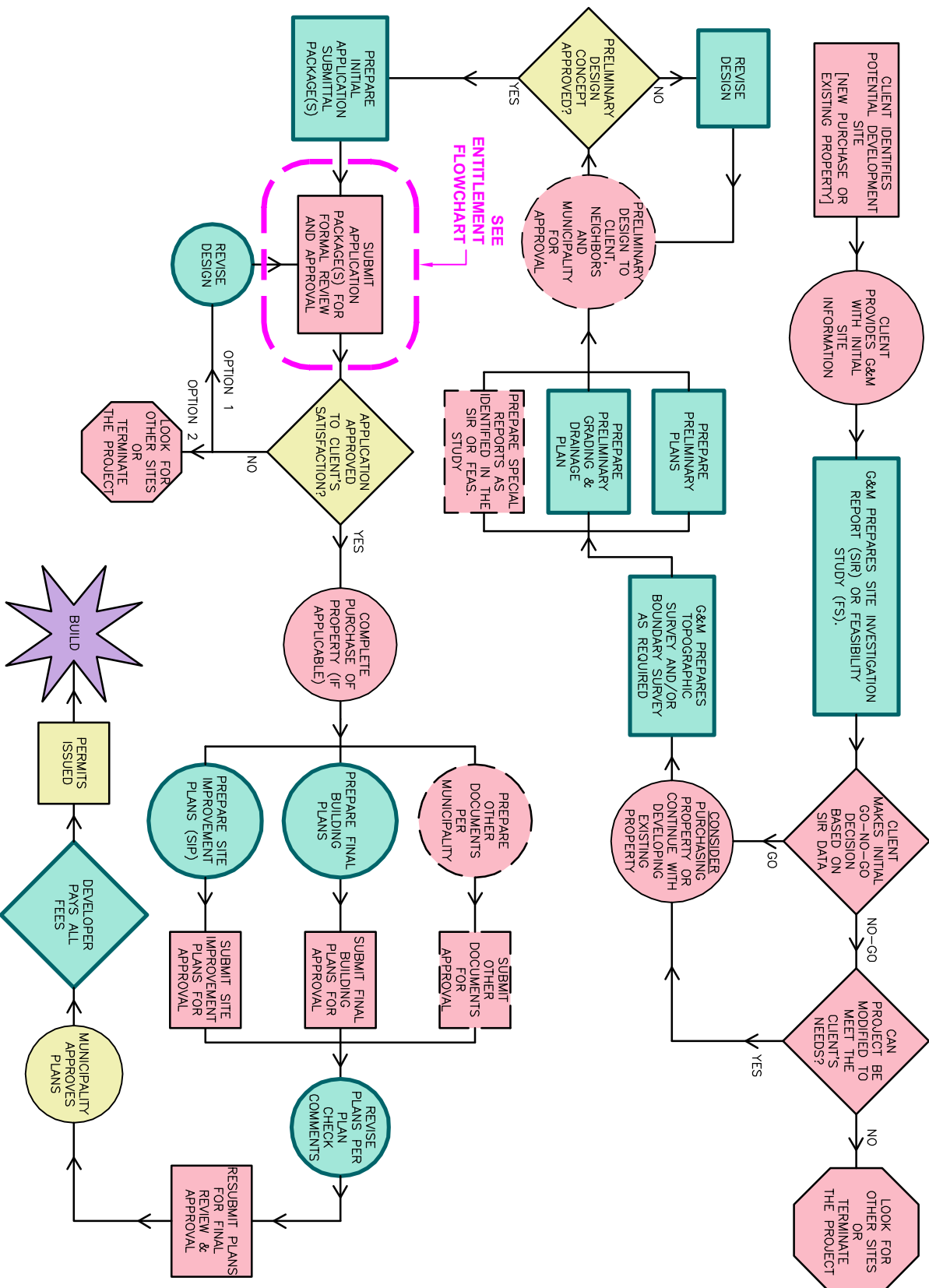


# Greenwood & Moore, Inc.

## Land Development Flowchart

(Rezoning • Conditional Use Permits • Design Review)



**PRIME RESPONSIBILITY**

- g&m [1]
  - DEVELOPER
  - MUNICIPALITY
- [1] A SEPARATE CONTRACT IS TYPICALLY REQUIRED FOR EACH SCOPE OF WORK.

DASHED LINES REPRESENT A STEP THAT MAY OR MAY NOT BE REQUIRED, DEPENDING UPON THE REQUIREMENT OF THE PROJECT SPECIFICATIONS.