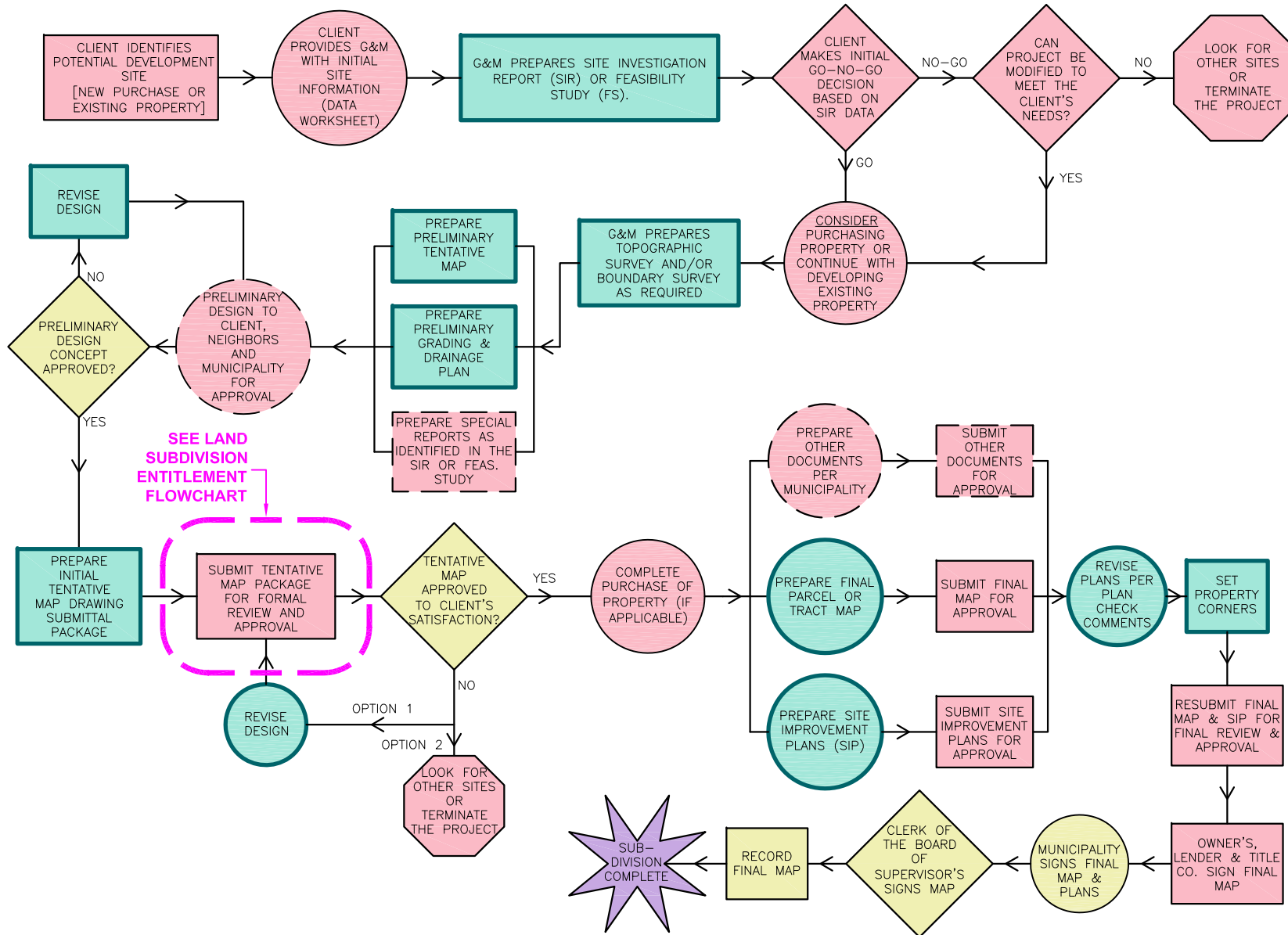


# Greenwood & Moore. Inc,

## Land Subdivision Flowchart



SEE LAND SUBDIVISION ENTITLEMENT FLOWCHART

**PRIME RESPONSIBILITY**

- G&M [1]
- DEVELOPER
- MUNICIPALITY

[1] A SEPARATE CONTRACT IS TYPICALLY REQUIRED FOR EACH SCOPE OF WORK.

DASHED LINES REPRESENT A STEP THAT MAY OR MAY NOT BE REQUIRED, DEPENDING UPON THE REQUIREMENT OF THE PROJECT SPECIFICATIONS.